



*Gates Cactus
and
Succulent Society*

OCTOBER 2006

NEXT MEETING: " WEDNESDAY " OCTOBER 4th

AT THE SAN BERNARDINO COUNTY MUSEUM

I- 10 AT CALIFORNIA STREET IN REDLANDS, CA.

7:30 PM

PROGRAM

We are privileged to have Woody Minnich to address the club. He will speak on Argentinean cacti and other succulents. Woody's programs are always informative and entertaining. Hope to see you all there.

Our October meeting will feature Woody Minnich speaking about Argentinean cacti. We will also again have the Grim Reaper who will preside over the Best Dead Plant section of the mini-show. Do you have your entry ready?

PRESIDENT'S MESSAGE

We are here in Calitzdorp, South Africa. The past 2 1/2 weeks have raced by and the wonderful experiences are piling up. We've been up and down the western part of the country and have looked at fantastic succulent plants large and small. Can't wait to tell you all about our adventures. We will see you on Wednesday at the Meeting.

October 21 is the date!

Our fall Home Garden Tour and BBQ will happen. Note the times and maps in this Open Gates.

JOYCE ALLEN OCT 1931 — SEP 2006

President	951-360-8802	Buck Hemenway
E-mail:	BuckHem@earthlink.net	
Vice-Pres	951-235-6678	Mike Green
Treasurer	951-369-7180	Karen Roholt
Secretary	909-947-5841	Ina O'Kane
Past Pres	951-243-5940	Amber Jones
Membership	909-793-5395	Joe Casey

Director	951-485-1816	Dennis Kucera
Director	909-794-7130	Judy Horne
Director	909-384-6819	Dan Griffith
Director/Editor	909-793-5395	Joe Casey
E-mail:	joekc@juno.com	
Librarian	909-796-6417	Barry Urman

LEADERSHIP TEAM -- 2006

Don't forget the following:

1. Plan to visit all three gardens and see the efforts that have been put in to them.
2. Our BBQ menu will include hamburgers, hotdogs and chicken **supplied by the club.**
3. Members are asked to bring side dishes, or salads and/or deserts for a fabulous pot luck.
4. The fourth annual Cactus Cookoff will take place. Bring your best cactus/succulent dish.
5. We'll have a Scavenger Hunt and prizes will be awarded.

November 4 is a special day. We are invited to a tour of the Cactus Collection at the Huntington Library Botanical Gardens, led by *John Tragger*. That is a Saturday and the tour will begin promptly at 10:00 AM from near the front gate. This tour is restricted to members, spouses, significant others and their children. It is free of charge and John is going out of his way to give us a very special inside look at the Huntington.

Remember that we have our regular mini-show in addition to the

Best Dead Plant Competition

Dr. Death is planning to officiate again this year.

Meanwhile, back here in SA, we listened to Ernst van Jarswald this week, and spent a day touring with Graham Williamson, it doesn't get any better for a succulent lovers.

Buck

Visit our Web Sites:

- Buck-** www.prickleypalace.com
- GCSS-** www.gatescss.org

**FRIENDSHIP IS A GROWING THING
THAT BLOSSOMS EVERYWHERE**

OCTOBER BIRTHDAYS

- 10/08 Donna Bills (46)
- 10/05 Ed Platzter (68)
- 10/12 Dan Griffith (52)
- 10/14 Leo Pickoff (85)
- 10/17 Michael Mazgai (55)
- 10/18 Alice Beardsley (73)
- 10/23 Helen Hughes (??)
- 10/23 Vince Conway (58)

To all we send our very best wishes especially to *Leo Pickoff* for the senior birthday this month.



OCTOBER ANNIVERSARIES

- 10/15 Lillian & Leo Pickoff(58)
- 10/20 Kim & Barry Urman(21)

Congratulations on your special day. May you be able to do all that you used to do or wish to do! And special best wishes to the Pickoffs on their 58th.



MINI-SHOW SUBJECTS FOR 2006

OCTOBER Portulacaria, Anacamperos
Thelocactus, Coryphantha, Copiapoa and
DEAD CACTUS

This is the Last Mini-Show this year.

SUCCULENTS OF THE MONTH
OCTOBER 2006 ANACAMPSEROS
PORTULACARIA TALINIUM
PORTULACA CERARIA

These 4 genera belong to the portulaca family, Portulacaceae, which have about 20 species and 400 species. The summer annual *Portulaca grandiflora* or moss rose is a favorite colorful flowering cover plant in summer. It grows well in well drained soil in full sun or as a container plant. This species is native to Argentina and Bolivia.

ANACAMPSEROS is a genus of about 50 species of succulent leaf perennials from arid regions of Africa and Australia.

A. alstonii is a small many branched succulent with a tuberous rootstock, that is caudex like when raised and exposed. Tiny leaves are compactly arranged in rows along the short branches. This South African plant has single white flowers 1 1/4 inches across.

A. albissima has several stems to 18 inches high that are tightly covered with small leaves and white stipules. This plant comes from Namibia and as white flowers.

A. telephiastrum, syn. A. intermedia is a mat forming succulent with oval short pointed leaves 3/4 inch long. It has small clusters of deep pink flowers each 1 1/2 inches across in summer. It is native to South Africa.

PORTULACARIA is a genus of 3 species possibly one variable species. It is a bushy perennial succulent shrub from semi-arid lowland hills of Namibia, South Africa, Swaziland and Mozambique.

P. afra is known as elephant food and goats like it too. This common succulent has jointed stems to 10 feet high with oval opposite, glossy green leaves 3/4 inch long. It has very small 1/16 inch pink flowers in summer.

P. afra 'foliisvariegatus' has leaves with wide yellow margins.

CERARIA is a genus of 5 species of sometimes deciduous shrubs from hilly areas of Namibia and South Africa.

C. namaquensis is a branchy shrub to 6 feet covered with small succulent leaves. It comes from Namibia.

C. Pygmaea is a dwarf shrub to 8 inches high with yellow green, fleshy opposite leaves 1/2 inch long. Down curving branches spread from a short caudex. It has small clusters of pale pink 1/4 inch flowers.

TALINIUM is a genus of about 50 species of annuals and often succulent woody based perennials from semi-arid sub tropical and tropical areas of Africa and North America to Central America.

T. caffrum is a succulent perennial to 6 inches high with a tuberous caudex like root. The fleshy green leaves are 1 to 5 inches long. In summer it has solitary cup shaped lemon yellow flowers 3/4 inch across. It is native to Namibia, Kenya and Angola.

T. guadalupense of Mexico is a succulent , deciduous perennial with spoon shaped red edged blue green leaves to 2 1/2 long forming rosettes at the branch ends. In summer it has clusters of 1 inch pink flowers.

T. paniculatum, jewels of Opar is a tuberous rooted deciduous perennial with erect unbranched stems to 3 feet. It has elliptical, fleshy leaves to 4 inches long. In summer the branch tips will have clusters of many bowl shaped red or yellow flowers. It is native to southern U. S. to central America.

Get Rid of Ants (Email Tips)

Put small piles of cornmeal where you see ants. They eat it, take it "home," & can't digest it so it kills them. It may take a week or so, esp. if it rains, but it works & you don't have the worry about pets or small children being harmed! Teresa, Mitchell, SD

CACTUS OF THE MONTH OCTOBER 2006

Copiapoa, Thelocactus, Coryphantha

COPIAPOA

This small genus of about 15 species are native to the dry coastal deserts of northern Chile. These slow growing spherical plants may be solitary or in clumps. These light gray green plants have numerous ribs indented below the areoles with few to many spines depending on the species. Water modestly during the hot months and keep dry during winter and covered during our winter rains.

C. cinerea has 8 inch wide spherical stems that are gray white with as many as 30 ribs. The dark brown areoles may have only 1 or 2 spines. In summer it may produce bright yellow flowers 1 1/2 inches long.

C. hypogaea syn. **C. barquitenis** may be solitary or form clumps of dark brownish green stems to 3 inches across. The white woolly areoles have a few white radial spines. In summer it may bloom with yellow flowers, 3/4 inch long.

C. krainziana forms clumps up to 3 feet across of spherical gray green stems 5 inches across. Each head may have up to 24 ribs with gray areoles and many gray spines. In summer it may produce golden yellow flowers 1 1/2 inches across.

THELOCACTUS

This genus has about 11 species occurring wild in southwestern U.S. and deserts of Mexico. They are small generally ribbed plants closely related to *Ferocactus*. They grow actively during the warm months with modest watering, but should have no watering or rainwater in winter.

T. bicolor, syn. *Ferocactus bicolor* is usually a solitary plant 4 inches across. It is native to Texas and north Mexico. The spherical bluish green stems have up to 13 ribs that may spiral. The areoles which have nectar secreting glands produce many spines that are red, yellow or white in color. In summer it may produce large 3 inch wide flowers that are dark pink with a red throat.

T. leucanthus usually forms clusters of small

cylindrical pale green stems each up to 14 ribs. The areoles with nectar glands may have up to 20 spines in each areole. In summer it may have funnel shaped flowers to 2 inches across.

T. macdowellii syn. *Echinomastus macdowellii* is usually a solitary small stem plant that are pale green. Each stem will have up to 25 warty ribs. White felted areoles are tightly arranged with numerous usually white spines. The funnel shaped magenta flowers are 2 inches across.

T. setispinus, syn. *Ferocactus setispinus* and *Hamatocactus setispinus*. This usually solitary small stem cactus are spherical to short cylindrical dark green stems. The stems will have up to 15 notched ribs. Rounded straw colored areoles have many white or brown spines. In summer and fall they have 2 inch yellow flowers with red throats.

CORYPHANTHA

This genus is related to *Mammillarias* and has about 45 species of spherical and cylindrical spiny cacti. They are native to arid southwestern U.S. and Mexico. In summer they may have funnel shaped flowers. Grow in very well drained soil mix, water in summer and keep dry in winter.

C. alversonii is our local native found in the Eagle, Chuckawalla and Little San Bernardino mountains near interstate 10. This species is called the fox tail cactus and usually has just one cylindrical stem to 12 inches tall with many white spines. The 1 inch wide flowers are light purple.

C. cornifera is a small spherical cactus to 5 inches tall and 3 inches thick. It comes from central Mexico. The gray green stems have angular tubercles with areoles containing up to 12 spines. In summer it has yellow flowers 2 1/2 inches across.

C. elephantidens is a low growing mid green plant up to 6 inches tall and 18 inches wide, coming from southwestern Mexico. The stems have prominent tubercles, knobs, with white wool at the base of the tubercle, and white wool on the crown. Each tubercle has up to 8 curved spines. In summer it may have dark pink flowers 4 inches across.

C. heiteri is a clump forming plant with dark

Cactus and Succulent Events

green stems covered with cone shaped tubercles. The areoles have up to 16 stiff spines. In summer it has bell shaped light purple flowers about 1 inch across.

C. macromeris comes from the southwestern U.S. and Mexico and is a variable species usually forming clumps. It has spherical gray green stems. The areoles may have up to 15 red spines. Deep pink or purple flowers to 3 inches across appear in summer.

C. scheeri from the southwestern U.S. and Mexico grows into clumps with 7 inch tall mid green stems. In summer this plant has yellow, white or pink flowers 3 inches across.

C. vivipara is now called *Escobaria vivipara*

MINI-SHOW RESULTS FOR SEPTEMBER 06 SUCCULENTS PACHYPODIUM, ADENIUM

Helen Hughes and Dennis Kucera judging

NOVICE small 6" pot or less
1st Betty Ann Kent Pachypodium lamerei

NOVICE LARGE, over 6" pot
1st Don McGrew Pachypodium lealii
V. saundersii

INTERMEDIATE LARGE, over 6" pot
1st Judy Horne Pachypodium
saundersonii
2nd Roholt Pachypodium lamerei

ADVANCED small, 6" pot or less
1st Bob Laughlin Pachypodium namaquanum
2nd Bob Laughlin Pachypodium gaeyi
3rd Bob Laughlin Pachy. namaquanum

ADVANCED LARGE, over 6" pot
1st Bob Laughlin Pachy. namaquanum
2nd Dennis Kucera Pachy. lamieri
3rd Joella Olson Pachypodium lameri

MINI-SHOW RESULTS FOR SEPT. 2006 CACTUS REBUTIA

Helen Hughes and Dennis Kucera judging

INTERMEDIATE LARGE PLANTER
1st Judy Horne Rebutia species 6 plants

ADVANCED small, 6' pot or less
1st Joella Olson Rebutia rauschii

October 14-15 SGVC&SS 13th Annual Winter Show and Sale, LA County Arboretum, 301 N. Baldwin Ave, Arcadia, CA.

This is the last big Show & Sale this year. You don't want to miss it.

October 21 Gates Cactus Garden Tour and BBQ, See Flyers for times and locations

November 4 Gates Cactus special tour of the Huntington Gardens, 10 AM , Huntington Botanical Gardens, 1151 Oxford Road, San Marino, CA. **Gates Members Only**

November 4-5 Rancho Santa Ana Botanic Garden, Fall Plant Sale, Sat. 11-4, Sun. 9-2, 1500 N. College Ave. Claremont, CA. (909) 625-8767

November 1 Gates Cactus Annual Auction, 7PM, San Bernardino Co. Museum Meeting place.

@@@@@@@

ANNUAL AUCTION

Please be thinking about NEXT month. The November meeting is our Annual Auction. Members are asked to bring one or two NICE plants to be auctioned. Remember, quality matters, if you wouldn't buy the plant, it's likely no one else will.

We also encourage all to bring their check books. This is our main **Fund Raiser** for the year. We usually bring in about 1/2 of our total year's income from this one event. We need everyone's help to make sure that the Auction is a big success again this year. You can pick up show quality plants to add to your collection at sometimes crazy low prices.

ONE GOOD PLANT

GARDEN TOUR AND BBQ
IMPORTANT NEW INFORMATION

The times for the Garden Tours on October 21st are shown on the flyer, attached. "How are we going to keep the food cold while we look at gardens" you ask. Mike Green will load all of your dishes into his Van, when you visit his garden and take them to Sue Sims' TLC Facility. There, they will be put into her two commercial refrigerators. Bring your dishes in cardboard boxes if possible to aid in moving and then stacking in the fridges.

Please bring serving spoons or forks for your dishes. Make sure they are marked (a piece of tape around the handle) with your name. IF you've lost utensils in the past, look over our collection of lost silverware. We'll have the box at the BBQ.

With the days getting shorter, the time of eating will be arranged around the activities. It will follow the Cactus Cook Off, whenever it ends.

The Society will provide the chicken, the hot dogs and the hamburgers. Coffee and cold drinks will also be provided. And all the plates and plastic eating utensils, napkins and cups will be available, FREE! What more could you ask for? There's really no excuse for missing this event. The location for dinner is in the Museum at the **SIMS' Tree Learning Center**. You'll really like this inside dining room and the interesting decor. If you are coming just for the BBQ, try to arrive around 5pm. It does take a bit of time for several of our ladies to setup the Buffet line and food tables. See you there.

OTHER TABLES

Plant Sales, Discussion, and Refreshment Tables will be open for the August 2006 Meeting. If you can, bring some 'Goodies' to support the **Refreshment Table**. They will be appreciated. And a special thank you to those who frequently bring the goodies we enjoy so much.

If you have a plant or two that you wish was not there taking up valuable space on your bench(es), it will look great on our raffle table!

MEMBERS SPOTLIGHT

The **GCSS** will randomly choose one new member and one long-term member to feature each month in the GCSS "Open Gates" newsletter. But we can't feature 'you' if you don't fill out the questionnaire Karen passed out at the last meeting.

Marie Hempy is a retired real estate broker. She joined our club in 2005 and also belongs to Victoria Avenue Forever and is a Master Gardener. She lives in Riverside. Her favorite cactus is a *Myrtillocactus geometraeus* [crest].

Dan Griffith, a Board member, and his wife Cidni joined GCSS in about 2000 because of their fondness for cactus. Dan is a photographer [griffithgallery.net] and is a Program Chair for the Redlands Camera Club. Cidni is a department head at Cal Poly Pomona. They live in San Bernardino. Dan's favorite cactus is *astrophytum*.



SAY HELLO— Our New Members

Joe & Danielle	Riverside, CA	Sep 06
Ig & Rose Siefert	Highland, CA	Sep 06

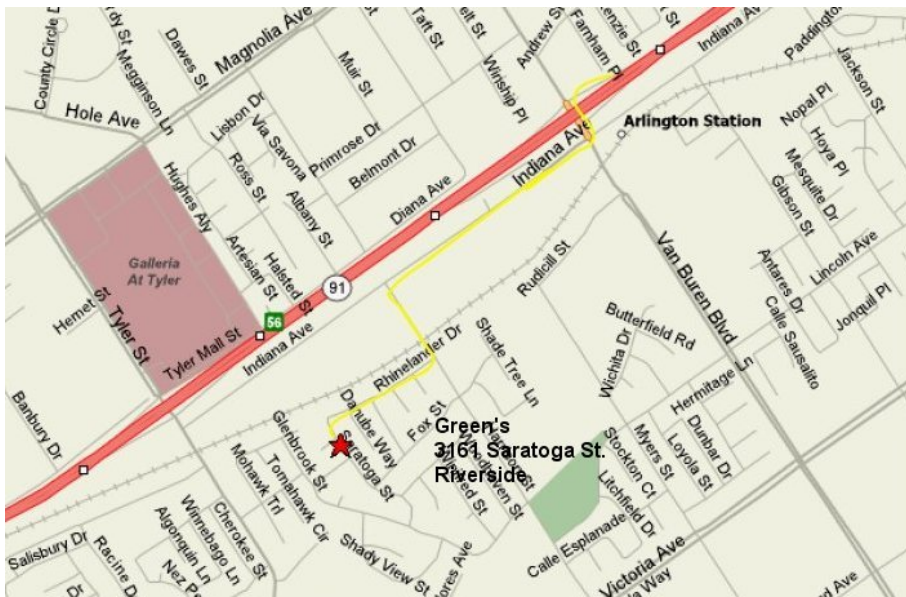
@ @ @ @ @ @ @

JOYCE ALLEN

I don't have any other info for you. Joella Olson sent an email telling of her passing.

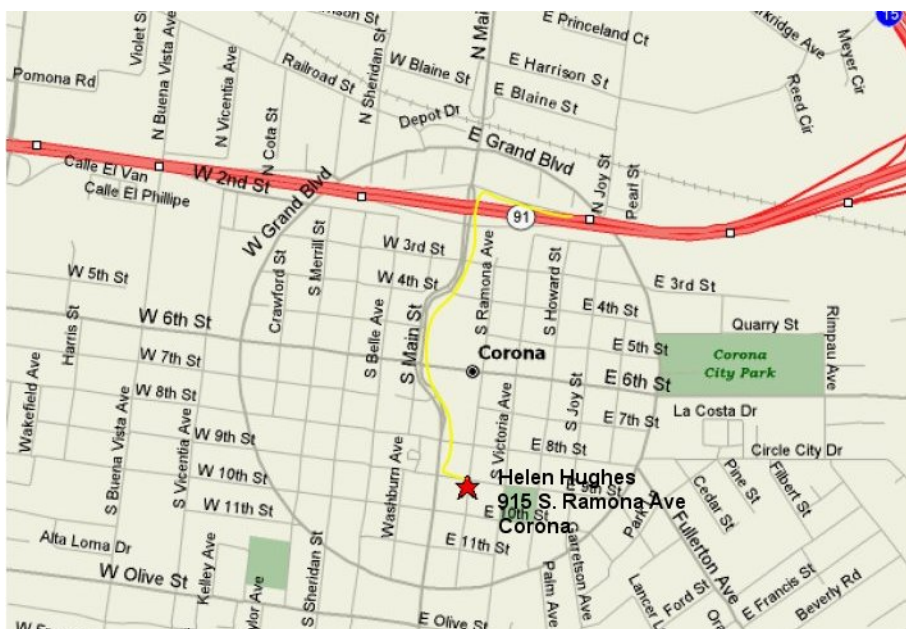
Joyce joined the Gates C&SS in 1997 and attended meetings regularly until being ravaged by cancer. Even then, on her better days, her daughter brought her to a few meetings. Joyce was a retired teacher and enjoyed our hobby, the plants and the people. She would have been 75 this October. If you didn't meet her you missed a charming lady.
Joe

Gates C&SS Home Tour and BBQ, October 21, 2006



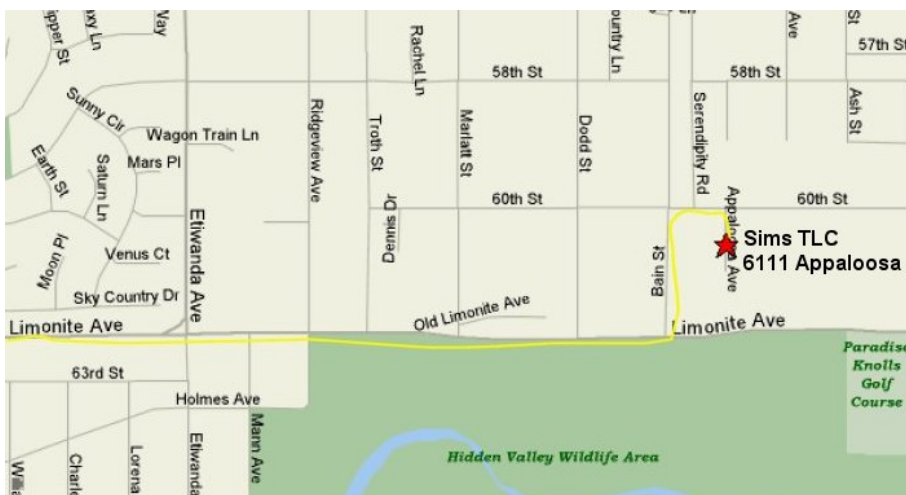
Green's Residence:
Arrive at about 1:00
3161 Saratoga St.
Riverside;

Exit 91 Freeway in
Riverside on Van Buren,
turn left (south) across
the freeway to Indiana,
Turn right to Harrison,
Turn left to Rhinelander,
Turn Right to Saratoga,
Turn left to 3161.



Helen's House:
Arrive at about 2:30
915 S. Ramona Ave
Corona, CA

Exit 91 Freeway in
Corona on Main St.,
Turn Left (north) across
the freeway to 9th, Turn
left 1 block to Ramona,
turn left to 915.



Sim's Residence:
Arrive at about 4:00
6111 Appaloosa Ave
Riverside (Pedley)

Exit I-15 on Limonite in
Riverside County, Turn
Right (east) on Limonite
to Bain (approx 2 miles)
Turn left to 60th, Turn
right to Appaloosa, Turn
right to 6111.